

FRIDGCON®



FUC-27R / FUC-27F



FUC-27R-2D / FUC-27F-2D



FUC-48R-4D / FUC-48F-4D



FUC-48R / FUC-48F



FUC-60R / FUC-60F



FUC-72R / FUC-72F

QUALITY COMMERCIAL REFRIGERATION WITH STAINLESS STEEL INTERIOR & EXTERIOR DESIGN

Description:

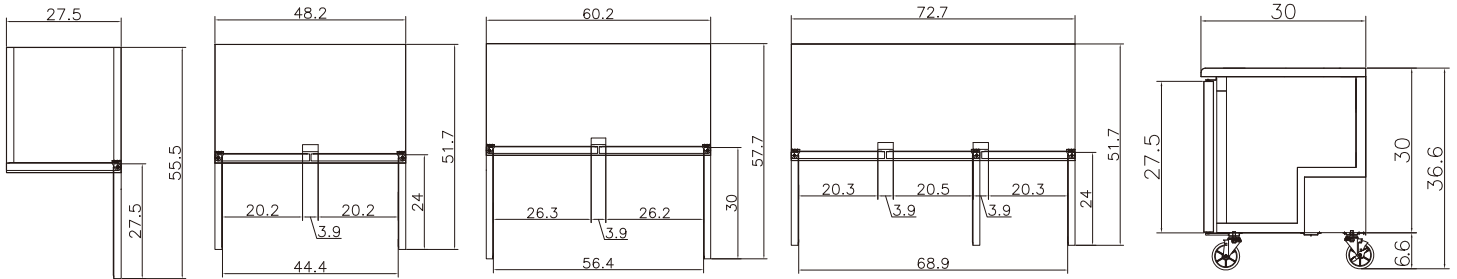
- Stainless steel 430 exterior and interior with 304 stainless steel floor ensures maximum durability
- Self-closing door with stay-open feature
- Automatic interior lighting
- Door locks with keys
- Recessed door handles
- Heavy-duty casters, with 2 front lockable casters
- Evaporator fan delay when door opens
- Environmentally friendly
- Quicker temperature recovery
- Top rated digital temperature control system
- Oversized refrigeration system for better performance



All Fridgcon Refrigeration Equipment are ETL Certified in the US & Canada, conforms to NSF / ANSI STD 7 Food Equipment Standard Sanitation

SOLID DOOR / DRAWER UNDERCOUNTER DESCRIPTION

FRIDGCON SOLID DOOR / DRAWER UNDERCOUNTER SERIES



FUC-27 / FUC-27F
FUC-27-2D

FUC-48 / FUC-48F
FUC-48-4D

FUC-60 / FUC-60F

FUC-72

SIDE VIEW

| Model | FUC-27 | FUC-48 | FUC-60 | FUC-72 | FUC-27F | FUC-48F | FUC-60F | FUC-27-2D | FUC-48-4D |
|--------------------------------|----------------------------------|--------------------------------|--------------------------------|------------------------------------|--------------------------------|--------------------------------|--------------------------------|--------------------------------|--------------------------------|
| Unit Type | Undercounter Refrigerator | | | | Undercounter Freezer | | | Drawer | Drawer |
| Number of Doors | 1 | 2 | 2 | 3 | 1 | 2 | 3 | 2 DRAWER | 4 DRAWER |
| Exterior Dimensions (in) LxWxH | 27.5x30x36.5 | 48.2x30x36.5 | 60.2x30x36.5 | 72.7x30x36.5 | 27.5x30x36.5 | 48.2x30x36.5 | 60.2x30x36.5 | 27.5x30x36.5 | 48.2x30x36.5 |
| Interior Dimensions (in) LxWxH | 23.9x23.6x26.7 | 44.7x23.6x26.7 | 56.7x23.6x26.7 | 69.1x23.6x26.7 | 23.9x23.6x26.7 | 44.7x23.6x26.7 | 56.7x23.6x26.7 | 23.9x23.6x26.7 | 44.7x23.6x26.7 |
| Shelf Dimensions (in) LxWxH | 23.2x17.6x1.3 | 21.5x17.6x1.3 | 27.6x17.6x1.3 | 2 - 21.5x18x1.3 1 - 23.6x18x1.3 | 23.2x17.6x1.3 | 21.5x17.6x1.3 | 27.6x17.6x1.3 | 23.2x17.6x1.3 | 21.5x17.6x1.3 |
| Shelf Qty (pcs) | 1 | 2 | 2 | 3 | 1 | 2 | 2 | 0 | 0 |
| Load Capacity Per Shelf (lbs) | 155 | 155 | 155 | 155 | 155 | 155 | 155 | 155 | 155 |
| Capacity (Cu.Ft.) | 7 | 12 | 16 | 19 | 7 | 12 | 16 | 7 | 12 |
| Net Weight (lbs) | 240 | 290 | 360 | 420 | 250 | 300 | 370 | 240 | 290 |
| NEMA | 5 - 15P | 5 - 15P | 5 - 15P | 5 - 15P | 5 - 15P | 5 - 15P | 5 - 15P | 5 - 15P | 5 - 15P |
| Cord Length (ft) | 8 | 8 | 8 | 8 | 8 | 8 | 8 | 8 | 8 |
| Voltage (v/hz/ph) | 115/60/1 | 115/60/1 | 115/60/1 | 115/60/1 | 115/60/1 | 115/60/1 | 115/60/1 | 115/60/1 | 115/60/1 |
| Power (W) | 260 | 390 | 390 | 390 | 350 | 600 | 600 | 260 | 390 |
| Power Consumption (kw/24h) | 1.2 | 1.7 | 1.7 | 1.7 | 1.6 | 3 | 3 | 1.2 | 1.7 |
| Compressor Power (hp) | 1/3 | 1/3 | 1/3 | 1/3 | 1/4 | 1/2 | 1/2 | 1/3 | 1/3 |
| Defrost Method | Air Defrost | Air Defrost | Air Defrost | Air Defrost | Electric Defrost | Electric Defrost | Electric Defrost | Air Defrost | Air Defrost |
| Defrost Power (w) | 0 | 0 | 0 | 0 | 410 | 500 | 500 | 0 | 0 |
| Climate types | 5 | 5 | 5 | 5 | 5 | 5 | 5 | 5 | 5 |
| Refrigerant Amount (oz) | 9.2 | 11.6 | 11.6 | 11.6 | 12.3 | 19.4 | 19.4 | 9.2 | 11.6 |
| Refrigerant | R-134a | R-134a | R-134a | R-134a | R-134a | R-404a | R-404a | R-134a | R-134a |
| Cooling Method | Ventilated | Ventilated | Ventilated | Ventilated | Ventilated | Ventilated | Ventilated | Ventilated | Ventilated |
| Temperature (°) | 33° to 45° | 33° to 45° | 33° to 45° | 33° to 45° | -8° to -1° | -8° to -1° | -8° to -1° | 33° to 45° | 33° to 45° |
| Insulation Thickness (mm) | 45 | 45 | 45 | 45 | 45 | 45 | 45 | 45 | 45 |
| Foaming Material | C ₅ H ₁₀ | C ₅ H ₁₀ | C ₅ H ₁₀ | C ₅ H ₁₀ | C ₅ H ₁₀ | C ₅ H ₁₀ | C ₅ H ₁₀ | C ₅ H ₁₀ | C ₅ H ₁₀ |
| Shipping Information | | | | | | | | | |
| Packing Dimensions (in) LxWxH | 28x34x38 | 50x34x38 | 62x34x38 | 74x34x38 | 28x34x38 | 50x34x38 | 62x34x38 | 28x34x38 | 50x34x38 |
| Crated Weight (lbs) | 260 | 320 | 390 | 440 | 270 | 330 | 400 | 260 | 320 |
| Freight Class | 150 | 150 | 150 | 150 | 150 | 150 | 150 | 150 | 150 |